

1. TECHNICAL SPECIFICATIONS

Power: Rechargeable Lithium battery DC12V
 Protection Class: IP44
 Received frequency: 433.92MHz

Working Temperature: -10°C to 65°C
 Motor can be assigned with up to 15 compatible remotes
 Motor has overload, low battery/charging protection

2. WIRE CONNECTION

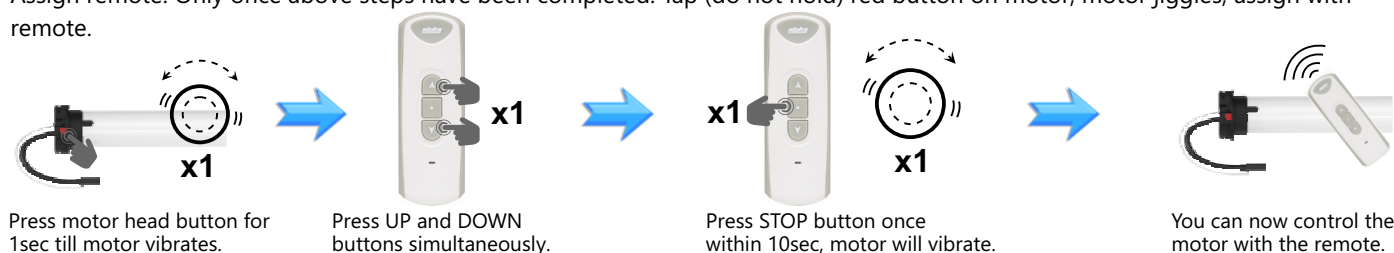
Fully charge the motor before use.
 Time to fully charge depending on charger used:
 1amp=28 hours 1.5amp=21 hours 2amp=18 hours
 Motor should be fully charged with a charger before a solar panel is connected.



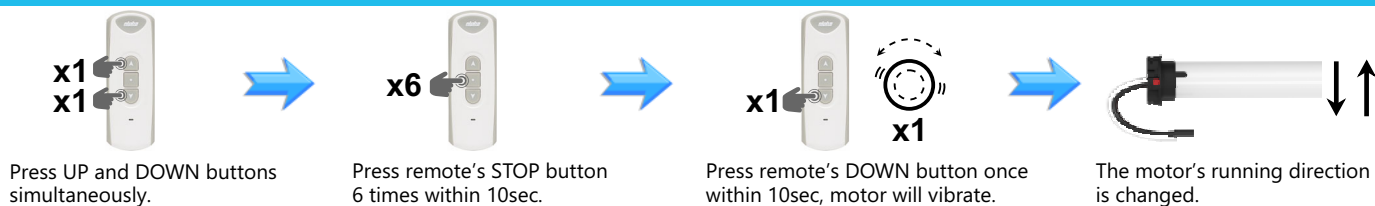
3. WAKE MOTOR UP AND ASSIGNING REMOTE

Motor is in sleep mode/storage mode. Wake motor up by: (a) Plug in 5V charger for a few seconds till motor vibrates. (b) Hold motor button down for 3 seconds till motor vibrates.

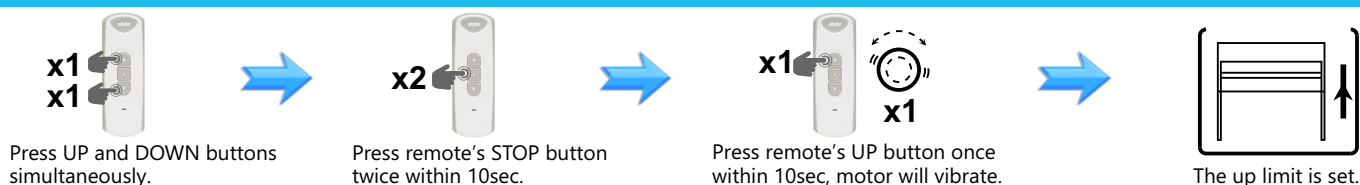
Assign remote: Only once above steps have been completed. Tap (do not hold) red button on motor, motor jiggles, assign with remote.



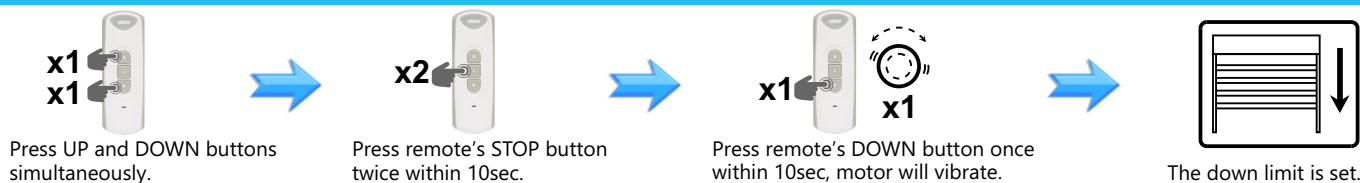
4. CHANGE DIRECTION



5. SET TOP LIMIT



6. SET BOTTOM LIMIT



7. SWITCH OD FUNCTION ON - 20/12 OD VERSION ONLY



PLEASE NOTE: FOR 20/12 OD VERSION ONLY

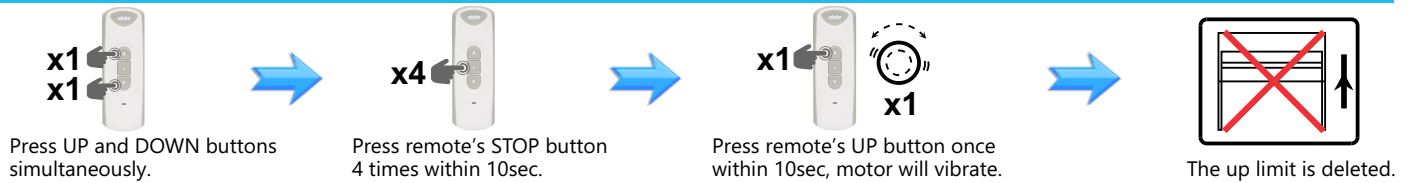
Both limits need to be set for OD function to work. OD function will switch on automatically once the limits are set.

8. SWITCH OD FUNCTION OFF 20/12 OD VERSION ONLY

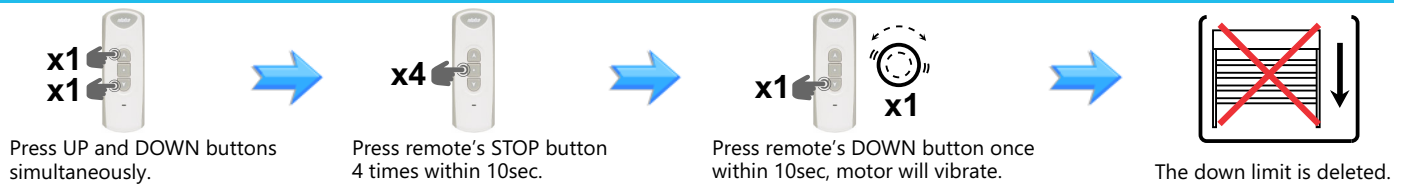


Should you wish to switch the OD function off, please press up & down together, STOP three times, then down.

9. DELETE TOP LIMIT

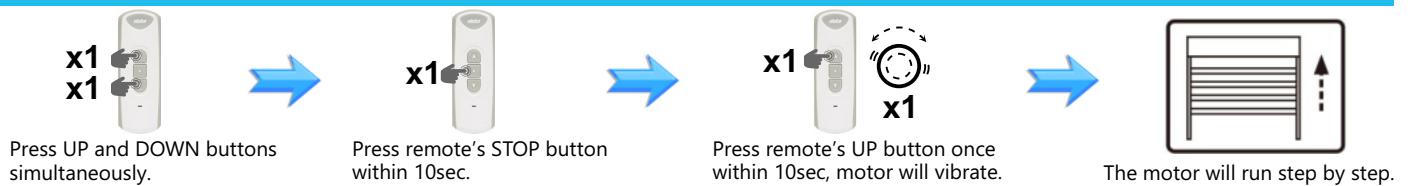


10. DELETE BOTTOM LIMIT



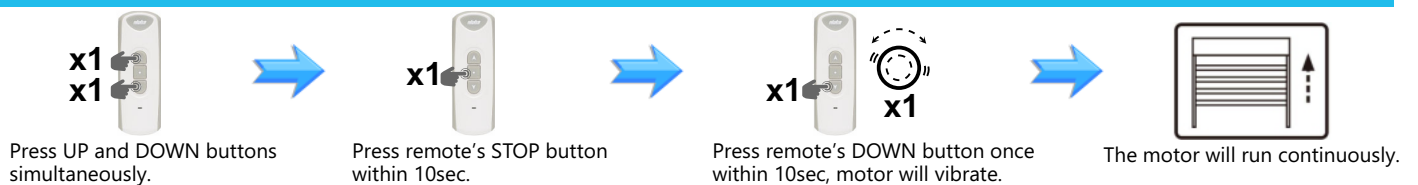
11. STEP BY STEP FUNCTION

If motor is in "Step by Step" function, press and hold UP or DOWN button for the motor to run continuously.



12. DELETE STEP BY STEP FUNCTION

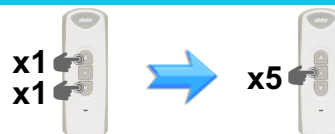
If motor is in "Step by Step" function, press and hold UP or DOWN button for 3sec the motor to run continuously.



13. CHANGE MOTOR SPEED

To make motor run faster

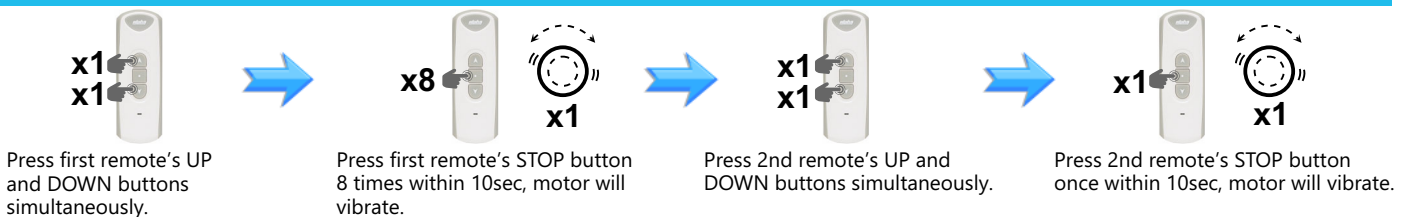
Press UP and DOWN together.
Press STOP 5 times, press UP to make motor faster.
Repeat this process to go faster.



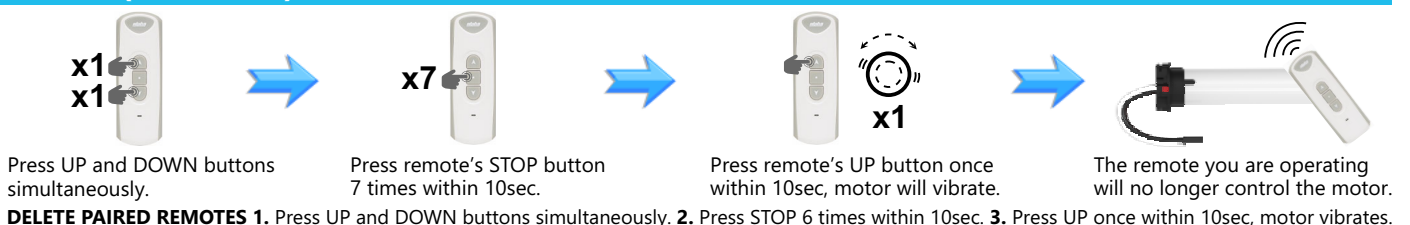
To slow motor down

Press UP and DOWN together.
Press STOP 5 times and then press DOWN.
Repeat this process to make the motor slower.

14. COPY NEW REMOTE CHANNEL



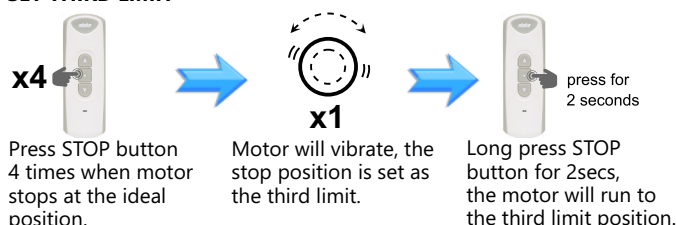
15. CODE (CHANNEL) DELETING



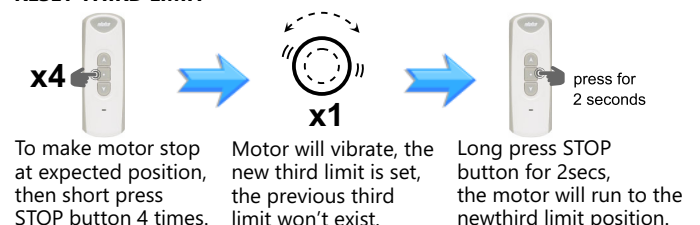
DELETE PAIRED REMOTES 1. Press UP and DOWN buttons simultaneously. **2.** Press STOP 6 times within 10sec. **3.** Press UP once within 10sec, motor vibrates.

16. SET THIRD LIMIT

SET THIRD LIMIT



RESET THIRD LIMIT



Please note: The third limit is also named as the intermediate limit, it is available at any position between up and down limit. The third limit will be deleted automatically if the up/down limit is deleted.

17. DELETING LIMIT VIA MOTOR HEAD BUTTON

Press and hold the red button on the motor head for 5 seconds, the motor will vibrate, all of the set limits (up, down and third) are deleted.

18. FULL RESET OF MOTOR

Press and hold the red button on the motor head for 10 seconds, motor will vibrate once at 5th second, and vibrate twice at 10th second. Release the button and motor is reset to factory mode. (All remotes and limits are erased)

19. LOW VOLTAGE WARNING

When battery voltage is low, press any button on remote, the motor will vibrate instead of running continuously. It will repeat a maximum of 10 times. This is to remind you to recharge the motor immediately.

**20. STORAGE MODE**

Press and hold red button for 15 seconds, motor will vibrate once at 5th second and twice at 10th second, then vibrate 3 times at 15th second, release button, motor is set to storage mode and won't respond to remote. (Existing remote and limits are still active in motor).



At Alpha Tubular Motors, your safety and the effective operation of our tubular motors with lithium-ion batteries are our top priorities. We kindly ask you to follow these important safety guidelines:

Avoid Overcharging

Please disconnect the motor from the charger as soon as the green light indicates a full charge. Overcharging can lead to overheating and may pose a fire risk.

Prevent Overheating

To help prevent overheating, ensure the motor is not exposed to high temperatures or direct sunlight for extended periods.

Immediate Action

If you notice any unusual warmth, discolouration, or odours coming from the motor, please disconnect it from the power source and stop using it right away.

Proper Storage

Store the motor in a cool, dry place, away from flammable materials. For best results, keep it within a temperature range of -20°C to 65°C

Use Approved Chargers

Always use the charger that comes with the motor or an approved replacement. Using incompatible chargers can create safety hazards.

Disposal

Please dispose of lithium-ion batteries according to local regulations. Avoid incinerating or submerging them in water, as this can lead to dangerous reactions.

Additional Notes

To keep your motor in top shape, charge it every six months.

For safety, please ensure that children do not play with the remote or motor.

Liability Disclaimer

While we at Alpha Tubular Motors strive to provide safe and reliable products, we cannot accept liability for any damage or personal injury resulting from improper use, charging, storage, or handling of our motors or their lithium-ion batteries. By using our products, you acknowledge that you have read, understood, and agree to follow these safety guidelines.